



Idaho Barley Varieties

Cooperating with the Idaho State Department of Agriculture
Idaho Field Office • PO Box 1699 • Boise, Idaho 83701

(800) 691-9987 • (208) 334-1507 • (208) 334-1114 FAX • www.nass.usda.gov



Released: July 13, 2012

Media Contact: Vince Matthews

2012 IDAHO BARLEY VARIETIES

Conrad (B5057) remains Idaho's leading malt variety for 2012. Conrad (B5057) accounted for 24.4 percent of all barley planted and 31.7 percent of the total malting variety acres. The leading feed variety was Baronesse, accounting for 7.4 percent of all barley planted. Baronesse accounted for 32.2 percent of the feed/food variety acres.

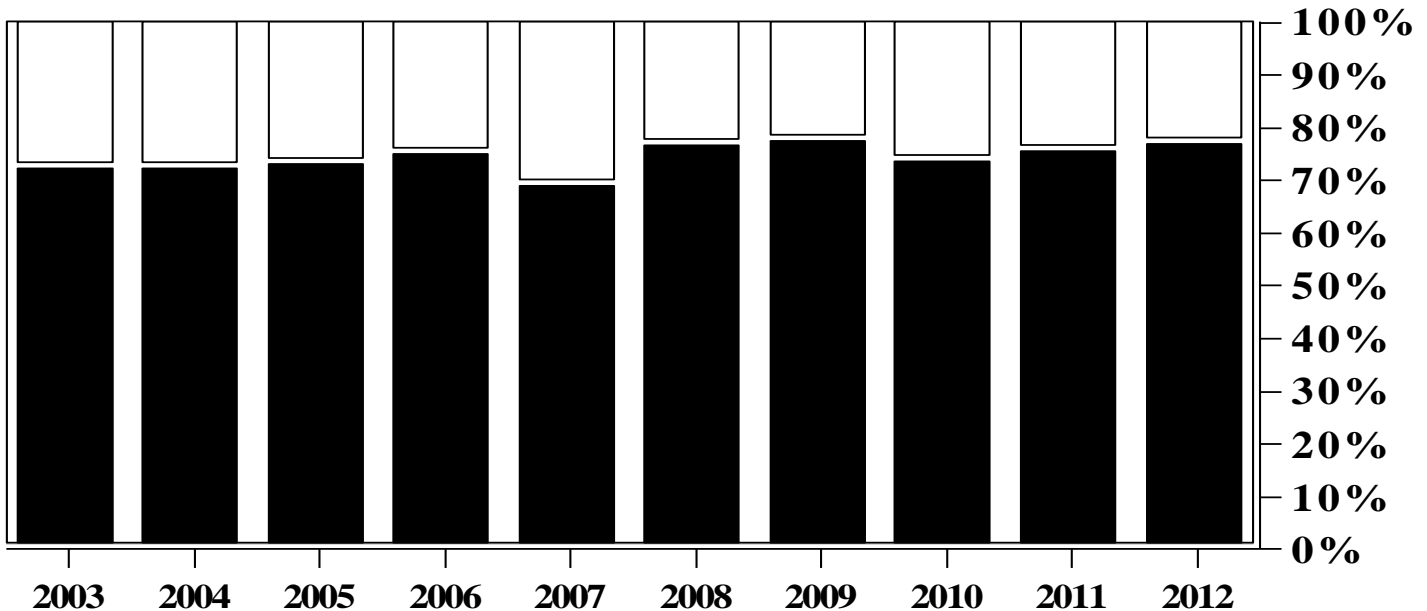
Malting Varieties: Malting varieties accounted for 77.0 percent of all barley acres in 2012, up 1.6 percentage points from last year. The leading malting variety was Conrad (B5057) accounting for 24.4 percent of all barley acres, which is at an increase of 2.7 percentage points from 2011. The second largest malting variety was AC Metcalfe with 13.6 percent of the acreage. Moravian 69 (C69) was third with

11.8 percent, Merit 57 (B2657) was fourth with 8.4 percent and Merit (B4947) was fifth with 5.0 percent of all barley acres.

Feed/Food Varieties: Feed/Food varieties accounted for 23.0 percent of all barley acres in 2012, which is a decline of 1.6 percentage points from 2011. Baronesse continues to be the leading feed variety, accounting for 7.4 percent of all barley acres, down 0.6 percentage points from a year ago. Champion is the second largest feed variety with 4.0 percent of the barley acreage followed by Criton with 1.5 percent of the acres. AB 2323 is fourth with 1.3 percent and Goldeneye is fifth with 0.8 percent of all barley acres planted.

IDAHO BARLEY Feed vs. Malt

□ Feed ■ Malt



Funding for the 2012 Idaho Barley Variety Survey was provided by the American Malting Barley Association, Inc. and the Idaho Barley Commission.

Find agricultural statistics for your county, State, and the Nation at www.nass.usda.gov.

IDAHO BARLEY VARIETIES 2012 CROP
ACRES AND PERCENTAGE OF BARLEY PLANTED TO VARIOUS VARIETIES 1/

VARIETY	2012									
	DISTRICT 10		DISTRICT 70		DISTRICT 80		DISTRICT 90		STATE	
	Acres	%	Acres	%	Acres	%	Acres	%	Acres	%
<u>MALTING</u> ^{2/}										
AC METCALFE	--	--	--	--	3,800	2.4	79,400	19.7	83,200	13.6
CDC COPELAND	--	--	--	--	--	--	10,900	2.7	21,500	3.5
CHARLES (w)	--	--	--	--	4,600	2.9	--	--	8,500	1.4
CONRAD (B5057)	--	--	--	--	--	--	113,900	28.3	149,100	24.4
ENDEAVOR (w)	--	--	--	--	300	0.2	--	--	3,500	0.6
HARRINGTON	--	--	--	--	--	--	17,000	4.2	18,100	3.0
LEGACY (B2978)	--	--	--	--	--	--	12,800	3.2	13,200	2.2
MERIT (B4947)	--	--	--	--	--	--	30,100	7.5	30,300	5.0
MERIT 57 (B2657)	--	--	--	--	--	--	51,200	12.7	51,300	8.4
MORAVIAN 69 (C69)	--	--	--	--	66,000	41.3	5,800	1.4	71,800	11.8
Other ^{3/}	700	1.7	--	--	9,000	5.6	9,800	2.4	19,500	3.2
Total Malting	11,000	26.2	--	--	121,000	75.6	338,000	83.9	470,000	77.0
<u>FEED/FOOD</u> ^{2/}										
AB 2323	--	--	--	--	--	--	4,700	1.2	8,000	1.3
BARONESSE	--	--	--	--	5,000	3.1	35,600	8.8	45,100	7.4
BEAR LAKE	--	--	--	--	--	--	1,600	0.4	1,600	0.3
CAMAS	2,000	4.8	--	--	--	--	--	--	2,000	0.3
CHAMPION	20,900	49.8	--	--	--	--	3,600	0.9	24,600	4.0
CRITON	--	--	--	--	7,500	4.7	500	0.1	9,100	1.5
GOLDENEYE	--	--	--	--	--	--	3,200	0.8	4,900	0.8
HAXBY	--	--	--	--	2,700	1.7	--	--	2,700	0.4
HAYBET	800	1.9	--	--	--	--	--	--	2,400	0.4
HECTOR	--	--	--	--	--	--	2,100	0.5	2,100	0.3
IDAGOLD	--	--	600	12.0	500	0.3	--	--	1,200	0.2
LUD	--	--	--	--	--	--	1,100	0.3	1,100	0.2
MILLENNIUM	--	--	--	--	1,800	1.1	1,600	0.4	3,800	0.6
PIROLINE	--	--	--	--	--	--	2,200	0.5	2,200	0.4
STEPTOE	--	--	--	--	1,600	1.0	--	--	1,900	0.3
WESTBRED 501	--	--	--	--	1,500	0.9	--	--	2,000	0.3
XENA	--	--	--	--	--	--	2,300	0.6	2,600	0.4
Other ^{3/}	2,400	5.7	2,800	56.0	13,000	8.1	4,500	1.1	22,700	3.7
Total Feed/ Food	31,000	73.8	5,000	100.0	39,000	24.4	65,000	16.1	140,000	23.0
All Barley	42,000	6.9	5,000	0.8	160,000	26.2	403,000	66.1	610,000	100.0

1/ Percentages are derived and may not multiply to acreage or add to total due to rounding. Some district percentages and acres are omitted in order to prevent disclosure of individual operations. 2/ Varieties in alphabetic order. Order does not imply rank in planted acres. 3/ Includes other varieties not listed. (w) Winter Variety

IDAHO BARLEY VARIETIES 2011 CROP
ACRES AND PERCENTAGE OF BARLEY PLANTED TO VARIOUS VARIETIES 1/

VARIETY	2011									
	DISTRICT 10		DISTRICT 70		DISTRICT 80		DISTRICT 90		STATE	
	Acres	%	Acres	%	Acres	%	Acres	%	Acres	%
<u>MALTING</u> ^{2/}										
AC METCALFE	1,600	4.6	--	--	8,000	5.6	77,900	23.3	87,500	16.8
CDC COPELAND	--	--	--	--	--	--	9,800	2.9	17,500	3.4
CHARLES (w)	--	--	--	--	9,900	6.9	--	--	10,300	2.0
CONRAD (B5057)	900	2.6	--	--	18,400	12.8	93,600	27.9	112,900	21.7
HARRINGTON	700	2.0	--	--	1,500	1.0	20,400	6.1	22,600	4.3
HOCKETT (MT 910189)	--	--	--	--	--	--	--	--	1,200	0.2
LEGACY (B2978)	--	--	--	--	--	--	18,800	5.6	18,800	3.6
MERIT (B4947)	--	--	--	--	--	--	19,200	5.7	20,200	3.9
MERIT 57 (B2657)	--	--	--	--	--	--	24,300	7.3	24,900	4.8
MORAVIAN 69 (C69)	--	--	--	--	52,800	36.7	2,900	0.9	55,700	10.7
MORAVIAN 83 (C83)	--	--	--	--	2,700	1.9	--	--	2,700	0.5
TRADITION (B2482)	--	--	--	--	--	--	5,400	1.6	5,400	1.0
Other ^{3/}	400	1.1	--	--	6,800	4.7	5,100	1.5	12,300	2.4
Total Malting	11,000	31.4	--	--	102,000	70.8	279,000	83.3	392,000	75.4
<u>FEED/FOOD</u> ^{2/}										
AB 2323	--	--	--	--	--	--	2,400	0.7	3,100	0.6
BARONESSE	3,800	10.9	800	13.3	5,400	3.8	31,500	9.4	41,500	8.0
CHAMPION	15,100	43.1	--	--	3,000	2.1	--	--	19,200	3.7
COLTER	--	--	--	--	--	--	1,100	0.3	1,100	0.2
CRITON	--	--	--	--	15,400	10.7	--	--	15,800	3.0
GOLDENEYE	--	--	--	--	--	--	2,400	0.7	2,500	0.5
HAYBET	--	--	800	13.3	--	--	--	--	1,500	0.3
HAYS	--	--	--	--	--	--	700	0.2	1,100	0.2
IDAGOLD	--	--	300	5.0	1,500	1.0	500	0.1	2,300	0.4
IDAGOLD II (C32)	--	--	--	--	1,700	1.2	--	--	2,300	0.4
LUD	--	--	--	--	--	--	1,000	0.3	1,400	0.3
MEDALLION	--	--	--	--	--	--	--	--	4,100	0.8
MILLENNIUM	--	--	700	11.7	--	--	600	0.2	1,800	0.3
PIROLINE	--	--	--	--	--	--	1,400	0.4	1,800	0.3
PRIMO	--	--	--	--	1,400	1.0	--	--	1,400	0.3
SPAULDING	2,900	8.3	--	--	--	--	--	--	2,900	0.6
STEPTOE	--	--	600	10.0	700	0.5	1,600	0.5	2,900	0.6
WESTBRED 501	--	--	--	--	3,200	2.2	--	--	3,400	0.7
XENA	--	--	--	--	--	--	3,000	0.9	4,100	0.8
Other ^{3/}	1,100	3.1	1,400	23.3	6,700	4.7	4,600	1.4	13,800	2.7
Total Feed/ Food	24,000	68.6	6,000	100.0	42,000	29.2	56,000	16.7	128,000	24.6
All Barley	35,000	6.7	6,000	1.2	144,000	27.7	335,000	64.4	520,000	100.0

1/ Percentages are derived and may not multiply to acreage or add to total due to rounding. Some district percentages and acres are omitted in order to prevent disclosure of individual operations. 2/ Varieties in alphabetic order. Order does not imply rank in planted acres. 3/ Includes other varieties not listed. (w) Winter Variety

VARIETY	PERCENT OF TOTAL BARLEY ACRES PLANTED 2008-2012				
	2008	2009	2010	2011	2012
<u>MALTING</u>					
AC METCALFE	18.0	15.5	16.8	16.8	13.6
CDC COPELAND	--	--	3.2	3.4	3.5
CHARLES (w)	0.3	2.2	2.3	2.0	1.4
CONRAD (B5057)	11.9	17.7	20.5	21.7	24.4
ENDEAVOR (w)	--	--	0.4	--	0.6
HARRINGTON	17.3	8.4	6.4	4.3	3.0
LEGACY (B2978)	8.9	7.3	4.1	3.6	2.2
MERIT (B4947)	7.2	8.1	6.5	3.9	5.0
MERIT 57 (B2657)	--	--	--	4.8	8.4
MORAVIAN 69 (C69)	8.9	12.3	11.2	10.7	11.8
Total Malting	76.7	77.4	73.7	75.4	77.0
<u>FEED / FOOD</u>					
AB 2323	0.5	1.3	1.2	0.6	1.3
BARONESSE	9.2	6.9	9.6	8.0	7.4
BEAR LAKE	0.2	--	0.2	--	0.3
CAMAS	1.6	1.7	0.4	--	0.3
CHAMPION	--	1.0	2.1	3.7	4.0
CRITON	1.2	1.5	3.0	3.0	1.5
GOLDENEYE	--	--	--	0.5	0.8
HAXBY	0.9	--	--	--	0.4
HAYBET	0.3	0.2	--	0.3	0.4
HECTOR	0.4	0.2	0.2	--	0.3
IDAGOLD	0.7	1.1	1.5	0.4	0.2
LUD	0.2	--	0.4	0.3	0.2
MILLENNIUM	0.4	0.7	0.4	0.3	0.6
PIROLINE	0.3	0.4	0.3	0.3	0.4
STEPTOE	0.9	0.8	1.1	0.6	0.3
WESTBRED 501	--	0.3	0.2	0.7	0.3
XENA	0.6	0.6	0.8	0.8	0.4
Total Feed/ Food	23.3	22.6	26.3	24.6	23.0

(w) Winter Variety